

Direct Observation of a New Growth Mode: Subsurface Island Growth of Cu on Pb(111)
[Phys. Rev. Lett. 75, 2976 (1995)]

C. Nagl, E. Platzgummer, M. Schmid, P. Varga, S. Speller, and W. Heiland

[S0031-9007(96)00096-8]

During the production process moiré patterns were introduced in Figs. 2(a) and 3(a) that did not appear in the original figures. The correct figures appear below.

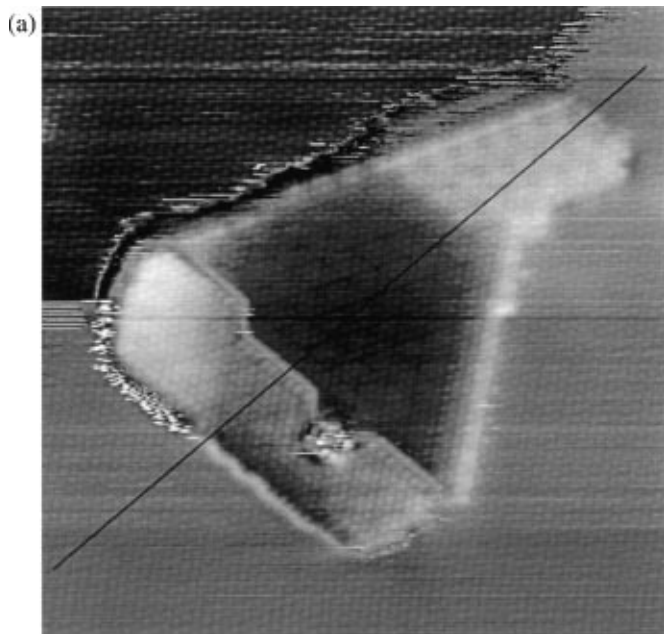


FIG. 2(a)

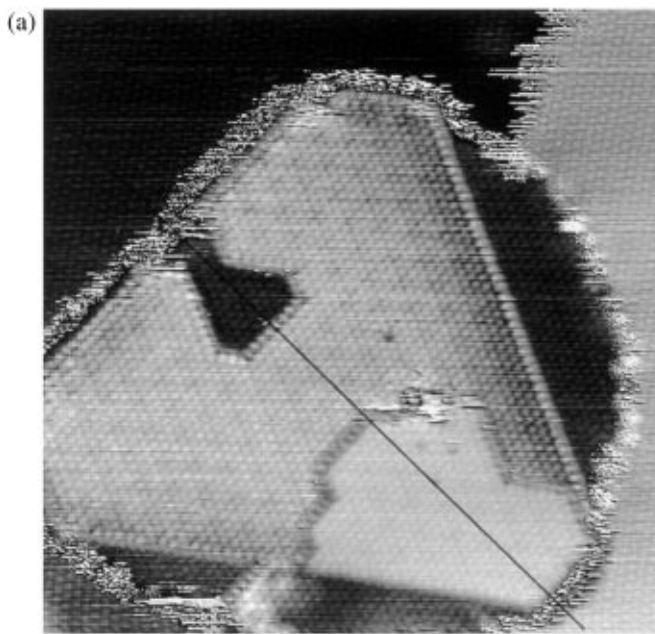


FIG. 3(a)